



Mysteries of Tibet

15 Days 13 Nights

Beijing, Xian, Lhasa, Shanghai

Day 1 Canada – Beijing

Depart Canada and fly to Beijing, crossing the International Date Line en-route.

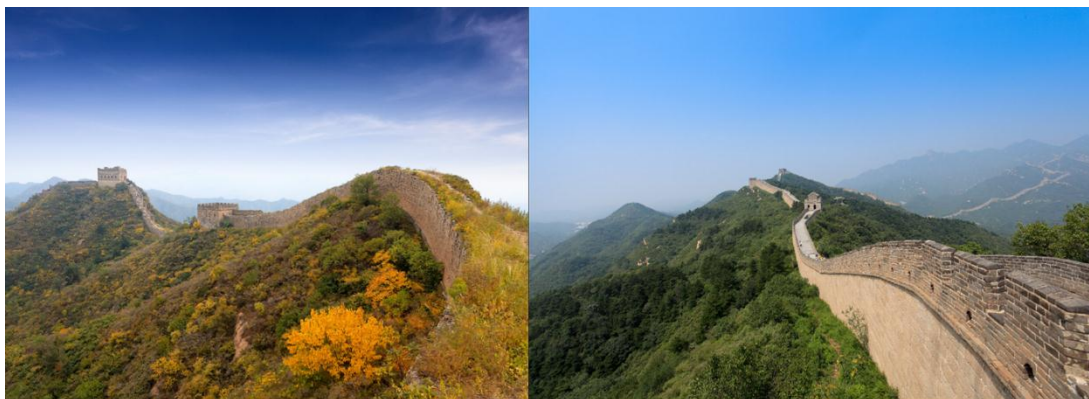
Day 2 Beijing

Arrive at Beijing Capital International Airport, you will be greeted by your guide and transferred to the hotel in the evening. Take time to relax and prepare for your full day Beijing tour tomorrow.

Accommodation: Beijing Doubletree by Hilton or similar

Day 3 Beijing (B/L/D)

You begin your first day in Beijing with a wake-up call, arranged by your tour guide. You will then enjoy a daily hotel buffet breakfast, featuring a large selection of Asian and Western cuisine. You will then set out with your trip leader to discover Beijing's Imperial treasures. Stand in Tiananmen Square, one of the largest and grandest public plazas in the world. Enter the imposing walls of the Forbidden City, once the exclusive domain of the Ming Dynasty, for an extensive tour through this vast complex. Return to your hotel in the evening, relax and refresh or enjoy an optional evening performance – Kung Fu Legend.



Day 4 Beijing (B/L/D)

Travel to one of the wonders of the world: the Great Wall of China. Its construction began in the 5th Century B.C. as a defence against the Mongols: 300,000 people (many of whom were buried in the wall) laboured on it over several centuries. The Great Wall extends across mountains and valleys for more than 3,000 miles and is only approximately a tenth of its former length. In the afternoon, you will tour the exterior portion of the Beijing National Stadium. The stadium was designed by an architectural firm in Switzerland and is currently the world's largest structure built of steel. In the evening, enjoy a delicious Peking duck Dinner at one of the most prestigious restaurants in Beijing recognized for its specialty

Day 5 Beijing (B/L)

This morning you will visit the beautiful Temple of Heaven. Afterwards, explore the historic Hutong neighbourhood via a rickshaw. The Hutong houses the oldest residences in Beijing, and the area is full of history and ancient Chinese culture. In the mid 1900s, most of the original Hutongs vanished and were replaced with high rise buildings and commercial offices. Your next stop will be the Summer Palace, which is renowned for its beauty and grandeur, and was ranked amongst the World Heritage Sites by UNESCO in 1998.

Day 6 Beijing (B)

Today you may enjoy a day of leisure, exploring Beijing at your own pace. You could visit Lama Temple, one of the largest and most important Tibetan Buddhist monasteries in the world. The building and artworks combine the renowned Han Chinese and Tibetan styles. You could visit the Beijing Zoo, best known for its collection of rare animals unique to China, with the Giant Pandas being the zoo's most popular residents.

Day 7 Beijing – Xian (B/L)

This morning you will take the bullet train from Beijing to Xi'an. After arriving in Xi'an, you will visit the Wild Goose Pagoda. The temple was originally used by a large team of scholars to translate the Buddhism Scriptures into Chinese and subsequently became a holy place for pilgrims. You will then have time to visit the Provincial Museum, which documents China's archaeological finds which date back to the Neolithic Age (20000 years ago), all the way to the dynasties from 980 AD.

Accommodation: Xian Grand Noble or similar



Day 8 Xian (B/L)

Today you will tour the impressive life-size Terracotta Army. The Terracotta Warriors Site is considered the eighth wonder of the world and was discovered by accident in 1974. You will see the army of over 7000 soldiers, archers, horses and chariots that has guarded Emperor Qin's tomb since 210BC. Each figure is unique and the painstaking repair and evacuation continues to this day. Later, explore the Ancient City Wall which is one of the oldest and best preserved Chinese city walls.

Day 9 Xian – Lhasa (B/D)

Today you will fly from Xi'an to Lhasa, Tibet's capital city. Upon arrival, you will be met by your guide and transferred to your hotel. En route you will drive through downtown Lhasa – the highest located city in the world, with an altitude of 3,650 metres above sea level.

Accommodation: Lhasa Hotel or similar

Day 10 Lhasa (B/L)

Today you will enjoy a city tour of the beautiful city of Lhasa. Your first stop will be the impressive Drepung Monastery. You will then continue on to a carpet factory, the Tibet Museum and the expansive Norbulingka Park. Norbulingka is the former summer palace of the Dalai Lama and contains several palaces and chapels.

Day 11 Lhasa (B/L)

Make the most of the day with an exploration tour to some of the most sacred places in Tibet. You will begin with a visit to the expansive 'Crown Jewel of Tibet' – the Potala Palace. The palace is an architectural wonder that towers over the city and has hundreds of rooms filled with treasures including; shrines and beautiful frescoes. Afterwards, you will visit the Sera Monastery, the Jokhang Temple and the beautiful bustling Barkhor Street bazaar. Your last destination today is the Tibetan Traditional Medicine Hospital.

Day 12 Lhasa – Shanghai (B)

Today you will conclude your visit with a trip to meet a Tibetan family, and afterwards you can spend some time exploring Lhasa at your own pace. In the afternoon you will be transferred to the airport for your flight to Shanghai. Upon arrival you make take some time to visit Nanjing Road, one of the busiest shopping streets in the world.

Accommodation: Shanghai Radisson Blu Hong Quan or similar

Day 13 Shanghai (B/L/D)

Today you will visit the Jin Mao Building which was built to represent Shanghai moving into the 21st Century. It is currently the tallest building in China and the third tallest in the world, standing at 420.5 metres high. It is located next to the Oriental Pearl Tower and the Shanghai World Financial Centre in the Lujiazui area of the Pudong district. You will then move on to the Shanghai Museum and People Square for a short history lesson, and conclude the tour with a visit to Xian Tian Di – one of the most popular new



entertainment districts in Shanghai, located in the former French Concession. This evening you may choose to join an optional Huangpu River Cruise, giving you the opportunity to admire many of Shanghai's famous sites including the People's Hero Monument, the Bund, the Oriental Pearl TV Tower, the bustling International Passenger Station of Shanghai Harbour, the docks and the Wu Song ancient gun fort relics.



Day 14 Shanghai (B/L/D)

Today you will travel to an Ancient Water Town, located to the west of Shanghai. The town has a history of more than 1,000 years and is comprised of hundreds of gardens established in the Ming and Qing dynasties. 15 rivers divide the town into 7 islands, with 49 historic bridges connected the town together.

Day 15 Shanghai (B)

Today you will be transferred to the airport for your scheduled flight home. We hope you enjoyed your journey to China with us!

B – Breakfast

L – Lunch

– Dinner

2015 Departure Date - Every Thursday

JUN	04, 11, 18, 25	AUG	06, 13, 20, 27
JUL	02, 09, 16, 23, 30	SEP	03, 10, 17, 23

TOUR PRICE PER PERSON DOUBLE OCCUPANCY – minimum 2 person.

Thursday Arrival in China	Toronto	Vancouver Calgary Edmonton	Land Only	Single Supplement
June – September	3641	3453	2845	833

HIGH SEASON AIRFARE SURCHARGE

Seasonality	Toronto	Vancouver Calgary Edmonton
April 19 – Jun 11, Jul 08 – Aug 16 Sep 27 – Oct 13, Dec 01 – 09 Dec 25 – 29	58	114
Jun 12 – Jul 07 Dec 10 – Dec 16	364	375

Other Canada Cities Add-On

Canadian Cities	Gateway	Roundtrip Add-on
YYJ, YCD	Vancouver	50
YLW, YKA, YYF		100
YCG, YQL, YXC, YXH, YPR, YXJ, YXS, YXT, YYD, YZP, YMM, YQU		140
YQR, YWG, YXE, YXY, YZF		200
YMQ, YOW	Toronto	50
YQB, YXU		70
YQG, YAM, YGK, YQT, YSB, YTS, YYB, YZR		140
YHZ, YBC, YBG, YGP, YGR, YQY, YUY, YVO, YYY, YZV, ZBF, YFC, YQM, YSJ, YYG		170
YDF, YFB, YQX, YWK, YYR, YYT		200

LAND ONLY does NOT include International airfare to China.

Estimated taxes and fuel surcharge of \$425 - \$475 are additional.

HIGH SEASON AIRFARE SURCHARGE is additional and is subject to date of travel.

International inbound travel NOT permitted from 02Jan - 15Jan and 01Aug to 10Sep.

HOTEL BLACK OUT DATES may apply.

ALL PRICES ARE IN CANADIAN DOLLARS AND ARE SUBJECT TO CHANGE WITHOUT NOTICE.



Your Tour Package Includes:

- International Roundtrip Economy Airfare from Canada to China.
- Round trip transfer to and from airport
- Sightseeing admissions as specified
- One way Bullet Train from Beijing to Xian
- Private Coach with air conditioning
- English Speaking Guide
- Superior hotel accommodation
- Meals: 13 Breakfasts, 9 Lunches, 5 Dinners

Your Tour Package Does NOT Include:

- Any taxes, airport fees and fuel surcharge.
- Travel insurance, Travel Visa and all personal expenses.
- Tipping and gratuities to local guides, drivers, and hotel staff.
- Excess baggage charges levied by airlines
- Laundry and other items of a personal nature
- Trip delay, or interruption by airline schedule change
- Cost for anything not specifically mentioned in the listing above